

SWIFT Mast Series

Using the SMC designed Quick Clamp Collar, the SWIFT series of push up and telescopic pneumatic masts have been designed to be lightweight and economical.

The push up or telescopic pneumatic mast comes anodised as standard and can be clamped at any height up to 10m, supporting head loads up to 10kgs. The SWIFT Push Up and Telescopic Pneumatic Mast Series is light weight, easily transportable, quick to deploy and robust in even the harshest of environments. Heights range from 4 to 10 metres with a base diameter of 74mm, carrying head-loads up to 10kgs. The push up or telescopic pneumatic mast can be elevated manually, or by hand or foot pump for even quicker and easier elevation.

See our range of accessories, including our SWIFT Push Up and Telescopic Pneumatic Mast Series Pivot Base, for installing masts on uneven ground and our SWIFT Mast Halyard for lowering and raising light head loads, without having to retract the mast.



Mast	Height Extended (m)	Height retracted (m)	Number of Sections	Vertical Head Load (kg)	Basic Weight of Mast (kg)
SWIFT4	4	1.33	4	10	6.4
SWIFT4PN	4	1.38	4	10	7.0
SWIFT5	5	1.38	5	10	7.5
SWIFT5PN	5	1.44	5	10	8.2
SWIFT6	6	1.58	5	10	8.3
SWIFT6PN	6	1.64	5	10	9.0
SWIFT7	7	1.61	6	10	9.4
SWIFT7PN	7	1.67	6	10	10.0
SWIFT8	8	1.63	7	10	10.2
SWIFT8PN	8	1.7	7	10	10.9
SWIFT9	9	1.66	8	8.5	10.9
SWIFT9PN	9	1.74	8	8.5	11.7
SWIFT10	10	1.79	8	8.5	11.6
SWIFT10PN	10	1.86	8	8.5	12.3



SWIFT Mast Series

This range of telescopic masts are all fitted with a quick release collar on the top section as standard, meaning you can interchange your head load in a matter of seconds.

Some models are only compatible with other products, Part numbers and/or descriptions may vary slightly due to type, size or finish of product. SMC Group can manufacture custom designed spigots to suit your requirements.

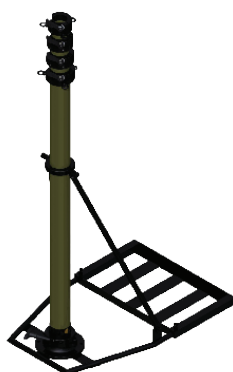


Mast	Base Guy	Upper Guy	Tripod	Halyard	Spigot Diameter (mm)
SWIFT4	NBG/SWIFT4	NUG/SWIFT4	TRI/SWIFT/01	SWIFT4/HAL	-
SWIFT4PN	NBG/SWIFT4	NUG/SWIFT4	TRI/SWIFT/01	SWIFT4/HAL	50
SWIFT5	NBG/SWIFT5	NUG/SWIFT5	TRI/SWIFT/01	SWIFT5/HAL	-
SWIFT5PN	NBG/SWIFT5	NUG/SWIFT5	TRI/SWIFT/01	SWIFT5/HAL	44
SWIFT6	NBG/SWIFT6	NUG/SWIFT6	TRI/SWIFT/02	SWIFT6/HAL	-
SWIFT6PN	NBG/SWIFT6	NUG/SWIFT6	TRI/SWIFT/02	SWIFT6/HAL	44
SWIFT7	NBG/SWIFT7	NUG/SWIFT7	TRI/SWIFT/02	SWIFT7/HAL	-
SWIFT7PN	NBG/SWIFT7	NUG/SWIFT7	TRI/SWIFT/02	SWIFT7/HAL	38
SWIFT8	NBG/SWIFT8	NUG/SWIFT8	TRI/SWIFT/01	SWIFT8/HAL	-
SWIFT8PN	NBG/SWIFT8	NUG/SWIFT8	TRI/SWIFT/02	SWIFT8/HAL	32
SWIFT9	NBG/SWIFT9	NUG/SWIFT9	TRI/SWIFT/01	SWIFT9/HAL	-
SWIFT9PN	NBG/SWIFT9	NUG/SWIFT9	TRI/SWIFT/02	SWIFT9/HAL	25.4
SWIFT10	NBG/SWIFT10	NUG/SWIFT10	TRI/SWIFT/02	SWIFT10/HAL	-
SWIFT10PN	NBG/SWIFT10	NUG/SWIFT10	TRI/SWIFT/02	SWIFT10/HAL	25.4

Mounting Options



SWIFT Upper/Base Guy Set
P/N: NUG/SWIFT(4/5/6/7/8/9/10)*
P/N: NBG/SWIFT(4/5/6/7/8/9/10)*



Rapid Deployment Unit
P/N: RDU/74

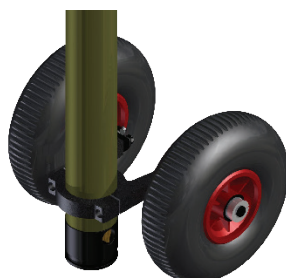


Side Mount Brackets
P/N: NSM/74B



SWIFT Mast Tripod
P/N: TRI/SWIFT/(01/02)*

Other Accessory Options



Mast Transport Wheels
P/N: 050002300



SWIFT Mast Cover
P/N: NKB/B



SWIFT Mast Halyard
P/N: SWIFT(4/5/6/7/8/9/10)/HAL*

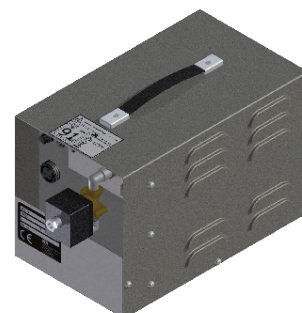
Pneumatic Operation Options



SMC Hand Pump
P/N: NHP1

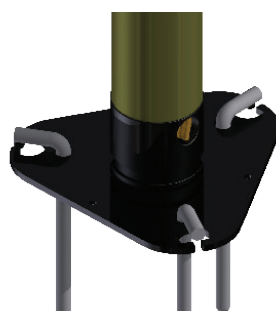


Twin Cylinder Foot Pump
P/N: NFP/1



NC1 Compressor
P/N: NC1/(12/24/230)*

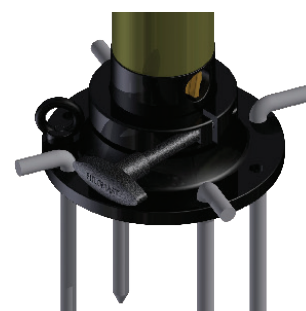
Base Mounting Options



SWIFT Series Flat Base
P/N: 050002000



SWIFT Series Pivot Base
P/N: 050002100



PFC Base Plate
P/N: 050029743

SWIFT Series Mast
Pneumatic P/N:
SWIFT(4/5/6/7/8/9/10)PN*
Push Up P/N:
SWIFT(4/5/6/7/8/9/10)*

Fitted with a
quick-release collar

Suitable for
headloads
up to 10kg

Lightweight,
from only 6.4kg

Easily deployable
and transportable

Anodised to
enhance durability

Push-up and
pneumatic
options available